

A. Reed Beds

Listen to the wind
Reeds and sedge

Booming Bitterns in spring
Reed buntings
Reed warblers

B. Water meadows

Lapwings in spring
Canada Geese
Chiffchaff
Cuckoo

Woodpeckers laughing
Barn owls in the evening

Rabbits

Buttercups
Ladies smock

C. Open water

Kingfishers
Crested grebes
Terns

Tufted ducks in winter
Mute swans
Herons

Lily pads

Damsel flies
Dragon flies

D. Grass land

Rabbits
Mole hills
Muntjac deer
Foxes

Cowslips
Ox eye daisies
Grasses

Butterflies
Bumble Bees

E. Woodland

Squirrel
Stoats
Bats in the evening

Oak, how old do you
think the oak tree is?
Ash

Blackthorn
Hawthorn
Wild roses
Brambles

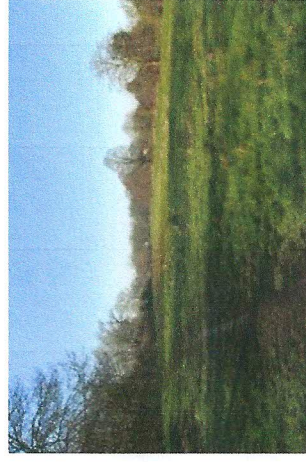
Woodland butterflies
Beetles

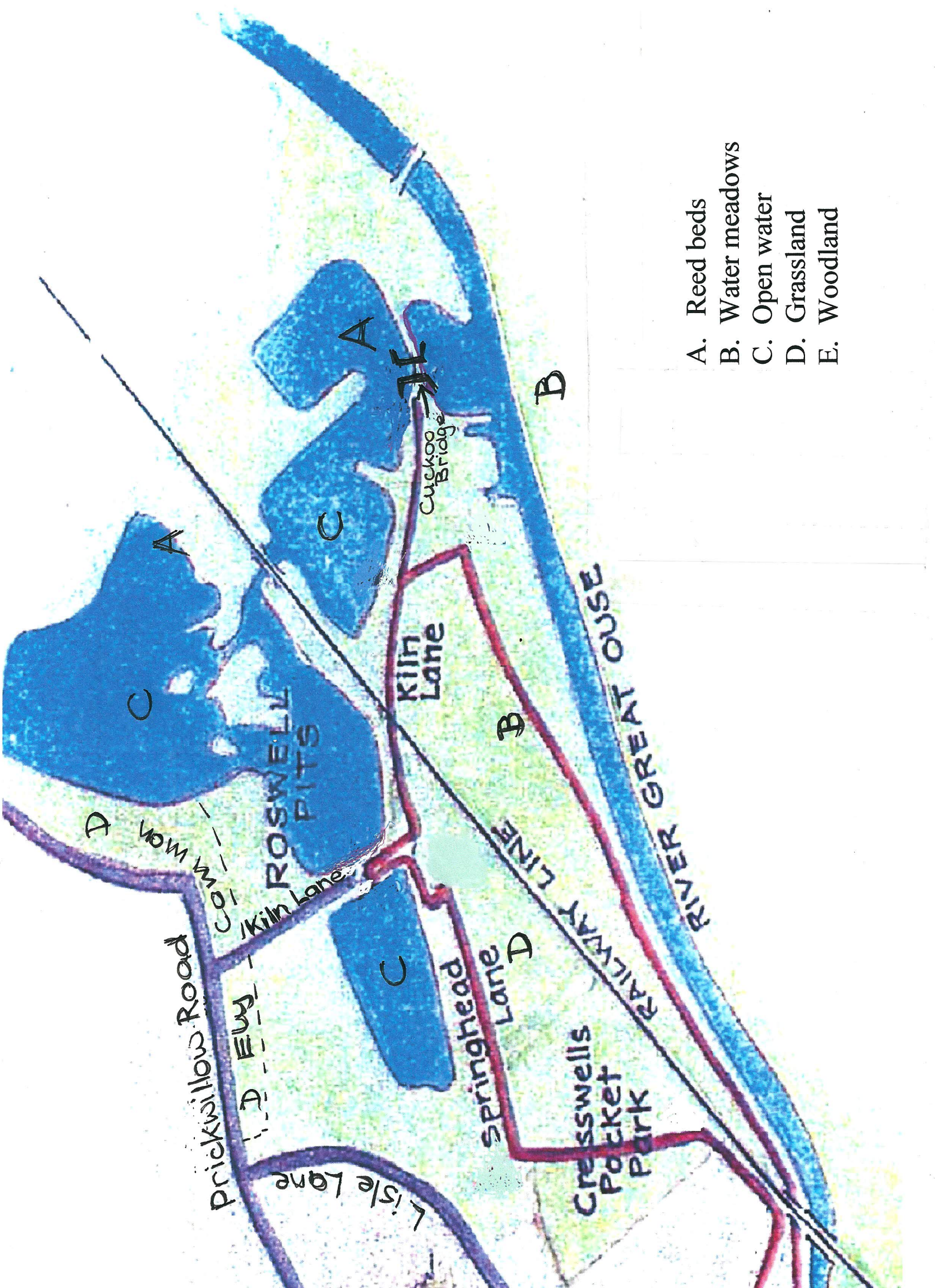
Try to Google
Some of these
plants and animals
before you go.

ELYWILDSPACE

Places to go
Things to see

Look and listen





- A. Reed beds
- B. Water meadows
- C. Open water
- D. Grassland
- E. Woodland

Prickwillow Road
 Lisle Lane
 Cresswells
 Pocket Park

ROSSELL PITS

Kiln Lane

Springhead Lane

RAILWAY LINE
 RIVER GREAT OUSE

Cuckoo Bridge

A
 C
 A
 C
 B
 B
 C
 D
 D